



ERASMUS;
OUR EUROPEAN LITERARY
ROUTES:
MARY SHELLEY IN ITALY



TABLE OF CONTENTS

01

LIFE OF MARY SHELLEY

The woman behind the genius

02

SHELLEY'S STAY IN ITALY

Her life into the "Bel Paese"

03

THE MAKING OF FRANKENSTEIN

From the idea to the masterpiece

04

HER WORK: FRANKENSTEIN

About Shelley's opera and its plot

05

ABOUT OUR VIDEO

The course of our video's creation



O I.

LIFE OF MARY SHELLEY

The woman behind the genius

ABOUT HER LIFE:

Mary Shelley was born in 1797 from Mary Wallstonecraft and William Godwin, two of the most important thinkers of the time. She has been educated by his own father at home. At the age of seventeen Mary fell in love with Percy Bysshe Shelley and she goes with him in France. Mary Shelley will die of a brain tumor in 1851.



“Invention, it must be humbly admitted,
does not consist in creating out of void
but out of chaos.”

—MARY SHELLEY



A dark, atmospheric still life painting serves as the background. It features a glass of water on the left, a large earthenware jar in the center, and a cluster of fruit, including peaches and apples, on the right. The lighting is dramatic, highlighting the textures of the glass, the jar, and the fruit against a deep, shadowy background.

02.

SHELLEY'S STAY IN ITALY

Her life into the "Bel Paese"



AN UNFORTUNATE SUCCESSION OF EVENTS:

Her daughter Clara
contracted dysentery and

died in Venice
SEPTEMBER

1818

Mary Shelley wrote to her stepsister
Claire Clairmont, giving her 'some
account of my adventures'

JANUARY

1819

JUNE


Whilst staying in Rome, her
son William died after
catching malaria

1821

Percy Bysshe Shelley drowned when
his boat sank during a heavy storm in
the Gulf of La Spezia

1822

JULY



DESPITE THE TRAUMAS MARY
SHELLEY ENDURED, HER HUSBAND AND
SHE CONTINUED TO TRAVEL AND WERE
ABLE TO ENJOY THEIR EXPERIENCES IN
ITALY





03.

THE MAKING OF FRANKENSTEIN

From the idea to the masterpiece

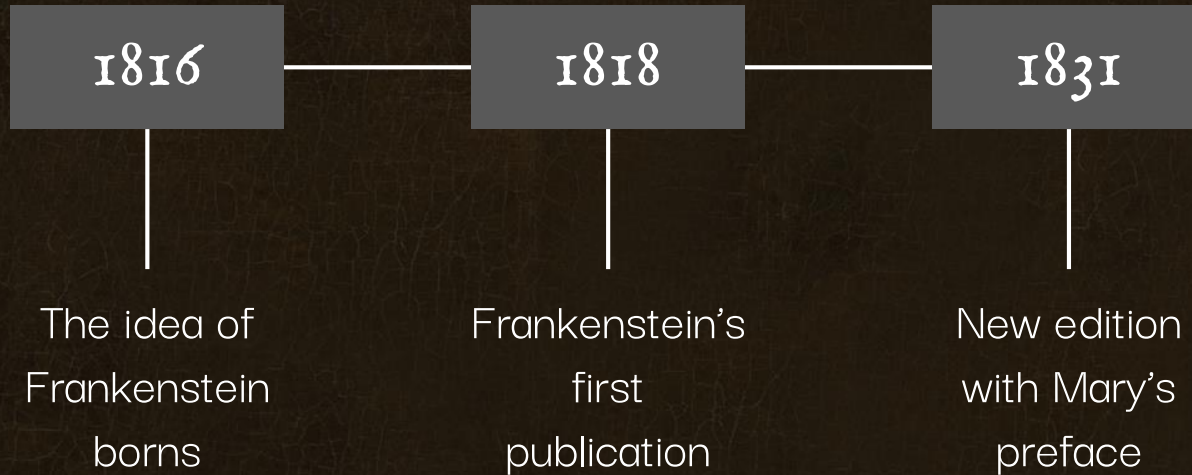


ON A DARK AND STORMY NIGHT...



On Summer 1816 (even known as "the year without Summer" for the eruption of the Indonesian Monnt Tambora Volcano) in Geneve, cause the endless rain, her friends and she stayed at home. At a certain point they thought to play at writing an horror story each, for fighting the boredom. Here Mary Shelley scribbled a first version of the work that was going to be her greatest success: "Frankenstein" (even known as "The modern Prometheus").

MARY SHELLEY'S NOVEL THROUGHT TIME

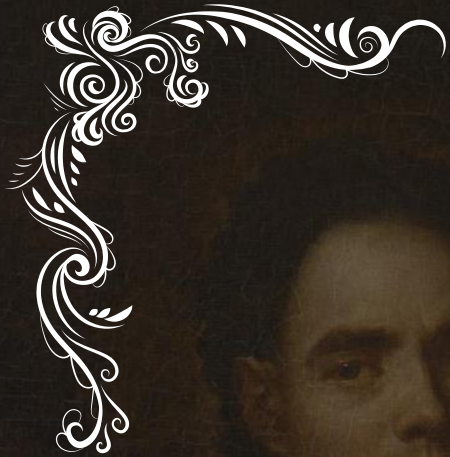




IF I CANNOT
INSPIRE LOVE, I
WILL CAUSE
FEAR!

The Creature; "Frankenstein" by Mary
Shelley





04.

HER WORK: FRANKENSTEIN

About Shelly's opera and its plot

THE MAIN CHARACTERS



THE MONSTER

It has no name. It has been created by Victor Frankenstein. All the suffering that it feels will turn it into a cruel creature

VS



VICTOR
FRANKENSTEIN

Young student who wants to defeat death. Following his objective he creates the Monster (the Creature; the Devil)

THE PLOT

Frankenstein was a brilliant student who desired the greatness. One day his beloved mother dies because scarlet fever. He starts to study biology and chemistry, after two years he succeed to create a "new type of human being". This is Frankenstein's fault, his whim of power over the death has killed all the people that Victor loved. The Creature that he made, however, was not evil; humans turned it cruel. At the end both creator and Creature die.



CULTURAL CONTAMINATIONS

INFLUENCES IN “THE MODERN PROMETHEUS”

SCIENCE FICTION

The creature has been built thanks to the science, but the knowledge used was unthinkable for the author's time

GOTHIC

During all the novel there are elements taken from the Gothic movement such as the darkness and the death

ROMANTICISM

It is possible to find Romantic elements, let's think of Nature, seen as something good and holy while human's activity is just corruption



05.

ABOUT OUR VIDEO

The course of our video's creation

THE PROCESS BEHIND THE VIDEO



BRAINSTORMING

We have focused on what creature felt during the novel, because we think that it is the real victim not Frankenstein



LOOKING FOR LOCATIONS IN OUR CITY

Then we have started to walk through our city to find out places where the Creature's grief could be seen by the watcher



START FILMING

Once we have found all the locations in Gualdo, we have started filming

A MODERN MONSTER

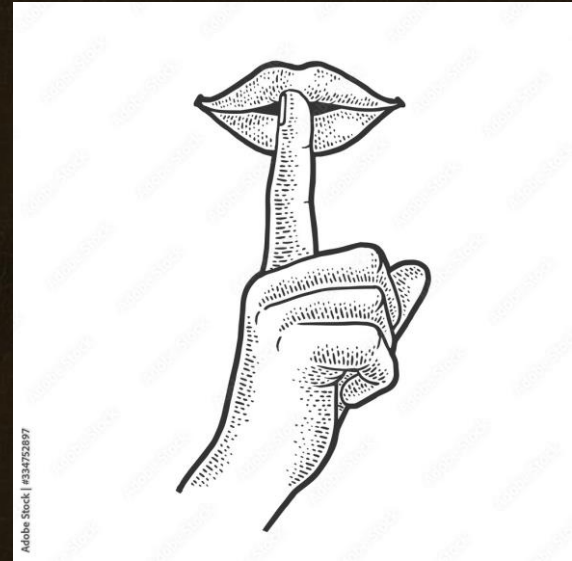


We have tried to represent the Monster's loneliness and anguish by comparing his situation with the one of a bullied child. Inclusion is the main topic of the video and the message that we want to share is: Treat people as you would like to be treated. Difference is beauty.

WHY ARE THERE NO VOICES IN THE VIDEO?

At first we thought to record some quote from the novel. But at a certain point we considered the idea to not distract the watcher with our voices.

We wanted that the spectator themselves could sympathize with the Monster through the scene and not thanks to our words





THANKS!

Does anyone have any questions?

CREDITS: This presentation template was created by **Slidesgo**, including icons by **Flaticon** and infographics & images by **Freepik**